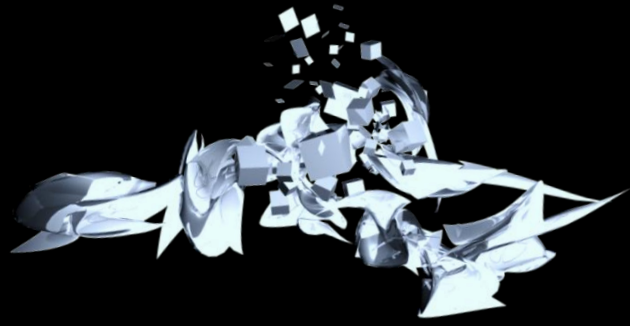




**National Association of
Health Services Executives**
Delaware Valley Chapter



break • through

[INSIDE]

2017 Recap

Members on the Rise

Save the Date | June Networking Events

NAHSE-DVC Website Job Opportunities

April 2017 Edition



break • through

An instance of achieving success in a particular sphere or activity



Reyna Florentino
President



Shonalie Roberts
President Elect



Sasha A. Tull
Treasurer



Marilyn Adibu
Parliamentarian

Greetings **NAHSE** Family!

In this edition of the NAHSE-DVC's Pulse, we reflect on what the Chapter has done since the new year, highlight member accomplishments and provide you with save the dates. This year is a particularly important one for the Chapter. Why? We are in an election year! That is right, it is time to express interest in leadership positions within the Chapter. There are not only executive board positions open for next term, you can become involved immediately by way of our newly formed committees. In considering, note the following advantages of serving within a leadership capacity in the Chapter.

- Broaden your connections and build valuable networks
- Gain expertise on complex issues that are integral to business
- Make an impact locally and nationally
- Contribute to the mission
- Gain leadership experience or use your existing experience to influence change

Your continuous support and presence allows us to break through the barriers many before us faced in the industry. We ask you to continue to spread the word, become involved, and invite your friends and colleagues to join NAHSE!

Sincerely,

The NAHSE-DVC Executive Board





National Association of
Health Services Executives
Delaware Valley Chapter

break · through



MLK Day of Service

NAHSE-DVC partnered with the Healthcare Leadership Network of the Delaware Valley (local ACHE chapter) and the Ralston Center on January 16th for a Day of Service to honor Dr. Martin Luther King Jr.'s legacy. The groups met at the Philadelphia Episcopal Cathedral to prepare and serve hot soup to seniors, the homeless, veterans and other community members in need in the West Philadelphia area.

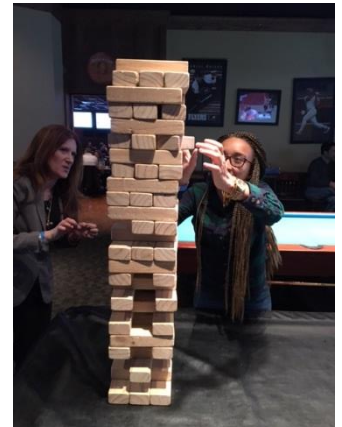


Kick It With DVC

On January 22nd, NAHSE-DVC invited members and friends to Fox and Hound Pub & Grille in King of Prussia, PA to network and watch football while cheering on their football pick for the Conference Championships. Attendees indulged in complimentary appetizers and unwound with a very competitive game of Giant Jenga! Look at that intensity!



In a ladies vs. gentlemen feud...
The gentlemen won!



National Association of
Health Services Executives
Delaware Valley Chapter

Your company can become an institutional member!

Find out how! Visit www.NAHSEDVC.com TODAY!



National Association of
Health Services Executives
Delaware Valley Chapter

break · through



Madam CJ Walker

The National Association of Health Services Executives
Delaware Valley Chapter
proudly supports the:

31st ANNUAL MADAM CJ WALKER *Awards Luncheon & Economic Empowerment Seminar*

NAHSE-DVC had the opportunity to send a chapter representative and fund an ad in the Pennsylvania Chapter of the National Coalition of 100 Black Women's Annual Madam CJ Walker Awards Luncheon and Economic Empowerment Seminar. This annual luncheon highlights African American women who have demonstrated excellence in entrepreneurial efforts and community outreach in the Delaware Valley Area. We hope to continue supporting such an empowering event in the future!

Follow Us: NAHSEDVC @NAHSE Delaware Valley Chapter Group: NAHSE Delaware Valley Chapter



Call to Leadership

NAHSE-DVC held its first informational webinar on March 15, 2017 to attract potential leadership candidates. If you were unable to attend and are interested in serving, visit www.nahsedvc.com for details.



National Association of
Health Services Executives
Delaware Valley Chapter

Your company can become an institutional member!

Find out how! Visit www.NAHSEDVC.com TODAY!

Become Involved Today!



DVC Committees



1. **Sponsorship** Committee
2. **Membership** Committee
3. **Marketing** Committee
4. **Events & Programming** Committee
5. **Scholarship** Committee
6. **Public Policy** Committee



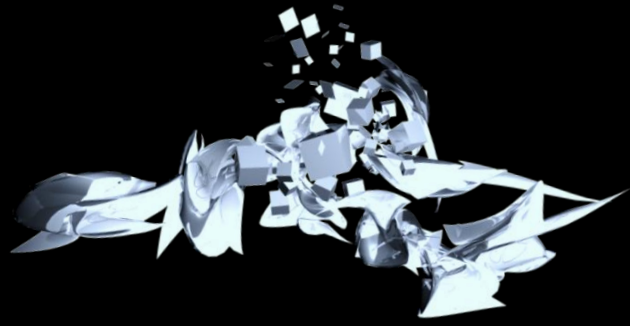
**It's Time For Your
Breakthrough**

Join a committee today!

Network with health care professionals in our region. Continue growing your career, with NAHSE. Visit us at www.nahsedvc.com/committees **TODAY!**



National Association of
Health Services Executives
Delaware Valley Chapter



break • through

Members on the **RISE**

NAHSE believes in highlighting the accomplishments of those who are part of its family so join us as we recognize our members' career breakthroughs! By featuring these members, we hope that you will be inspired to continue on your path to further professional success. Should you know of any member(s) who had a recent career breakthrough, please email us at infonahse@gmail.com so that we can continue efforts to congratulate and showcase our members. Sit tight and enjoy!



National Association of
Health Services Executives
Delaware Valley Chapter

break • through



Christopher Nyenpan

NAHSE-DVC is honored to have been involved in the career breakthrough of Christopher Nyenpan. In April 2016, Christopher (then, a senior at Temple University majoring in Public Health) yearned for exposure to the healthcare administration industry. By connecting with NAHSE-DVC, Christopher secured an informal internship at the Hospital of the University of Pennsylvania with Kenneth Munroe, Director of Operations. Now a recent graduate, Christopher is a Project Manager at Society of Hospital Medicine. In his role, he manages and tracks the implementation of quality improvement initiatives and collaborates with center staff and volunteer physicians in support of these initiatives. Congratulations Christopher!

Dominic Adams, MHA, CPHRM

NAHSE-DVC would like to congratulate immediate Past-President, Dominic Adams, on assuming the role of Associate Director of Risk Management at Temple University Hospital (TUH). In this position, Dominic is responsible for directing and coordinating the strategic and operational responsibilities, and maintenance of TUH's clinical risk management activities and key patient safety initiatives. Given his prior experience, Dominic is now leading interdisciplinary system-wide projects that will streamline clinical operations and health IT. Additionally, Dominic will be joining the US News Top 10 Nationally Ranked Risk Management Program at Temple University this fall as an Adjunct Professor. He has propelled the careers of many students through his dynamic mentorship. Dominic returns to TUH by way of Deloitte where, as a consultant, he ensured continuity of services for a \$575M merger and acquisition.

As a NAHSE-DVC Advisory Board member, Dominic provides oversight to our Executive Board and ensures that sustainability and growth strategies exist for the Chapter. Congratulations Dominic, we are so proud of you!



Members on the Rise



National Association of
Health Services Executives
Delaware Valley Chapter

break • through



From left to right: Marilyn Adibu, Jackie Y. Orr, FACHE,
Sasha Tull and Shonalie Roberts

Jacquelynn Y. Orr, FACHE

NAHSE-DVC would like to congratulate Jacquelynn (Jackie) Y. Orr, FACHE for receiving the Drexel University Alumni Board of Governors Outstanding Student Award for her leadership and engagement at Drexel University. Jackie is a Doctor of Public Health (DrPH) candidate in Health Policy and Social Justice in the Department of Health Management and Policy at Drexel University's Dornsife School of Public Health. She was selected because of her efforts to create Drexel's first-ever graduation ceremony for students of African descent. Working in collaboration with Drexel's Black Alumni Council and student groups, as then-Vice President of the Drexel Black Graduate Student Union (DBGSU), she created the ceremony concept, confirmed campus partners, advertised the event, and implemented the program.

Jackie's leadership has significantly contributed in furthering the mission of NAHSE. Congratulations Jackie we are so proud!

Marilyn Adibu, MS

NAHSE-DVC congratulates its very own Parliamentarian Marilyn Adibu for assuming an EHR Application Analyst role at Thomas Jefferson University Hospitals – Jefferson Health! With her keen understanding of system design and operational workflows, Marilyn will be integral to Jefferson's Epic Implementation and provide in-depth analysis of key processes and functions to optimize operations. Marilyn comes to Jefferson from St. Luke's University Health Network where she served as an Epic Credentialed Trainer. Please join us in wishing Marilyn much success!



Members on the Rise



National Association of
Health Services Executives
Delaware Valley Chapter

break • through



Nicole Huff, DHA, MBA, CHC, CHSP

Dr. Nicole S. Huff is the Chief Compliance & Privacy Officer for St. Luke's University Health Network where her key area of responsibility includes ensuring that the network follows healthcare regulations, privacy laws, and internal policies. She recently assumed the role as President for the Eastern Pennsylvania Healthcare Executive Network (EPAHEN). EPAHEN is Eastern Pennsylvania's independently chartered chapter of the American College of Health Executives (ACHE) serving several counties of the Pennsylvania area.

Dr. Huff is a proud NAHSE-DVC member, mentor and professor. Previously, she was Director of Compliance & Privacy and Hospital Compliance Officer. Dr. Nicole Huff continues to drive achievement in areas of corporate compliance, financial accounting, corporate governance, financial statement analysis, and mergers and acquisitions. Join us in congratulating Dr. Huff in her continued success!

Phil Okala, MHA, FHFMA, FACHE

NAHSE-DVC congratulates its very own Advisory Board member Phil Okala on his new role at Penn Medicine! Phil was recently appointed as the Chief Operating Officer of the University of Pennsylvania Health System (UPHS) for the Philadelphia Region. In this role, Phil is responsible for program integration across the system's three Philadelphia Hospitals – Hospital of the University of Pennsylvania, Penn Presbyterian Medical Center and Pennsylvania Hospital.

Previously, Phil was UPHS's Senior Vice President for Business Development, a role he held since June 2013. Prior to that, he was Vice President for Service Line Integration, and earlier, Chief Administrative Officer for the Cancer Service Line. Before joining Penn Medicine in 2007, Phil was the System Vice President for Cancer Service Line at Geisinger Health System in Danville, PA; among other roles, Vice President for Clinical Strategic Planning at Roswell Park Cancer Institute in Buffalo, NY; and Senior Management Analyst at MD Anderson Cancer Center in Houston, TX. Well done Phil!



Members on the Rise



National Association of
Health Services Executives
Delaware Valley Chapter

break • through



Reyna Florentino, CPHRM

Just last month Reyna Florentino, our NAHSE DVC President earned the designation of Certified Professional in Healthcare Risk Management (CPHRM). To earn this certification, an individual must satisfy eligibility requirements and incorporate a blend of education and associated healthcare-specific professional experience. Additionally, Reyna has accepted a new role at Mayo Clinic affiliated Guthrie Health as the Program Manager for Patient Safety of the Robert Packer Hospital (RPH). RPH is a 254-bed tertiary care level II trauma teaching hospital in Northern, PA. In her new role, Reyna will be responsible in assisting with the development of the strategic and operational structure of the Patient Safety Program at RPH. She will continue serving within her capacity as President for the DVC and on National Committees within NAHSE. It is surely an exciting year ahead with DVC elections approaching, the continuation of DVC's partnership

with Main Line Health's Health Career Academy, and our great June event line up! She begins her new role with much excitement in May of 2017. Congratulations Reyna!

Members on the Rise

SAVE THE DATE


The Children's Hospital
of Philadelphia®



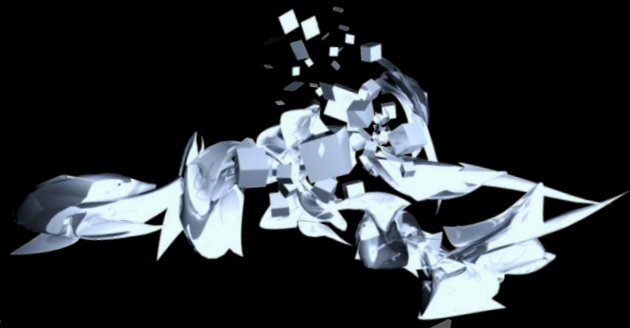
Generational Diversity Panel

Wednesday, June 21st, 2017

We will keep you up to date as the date approaches!

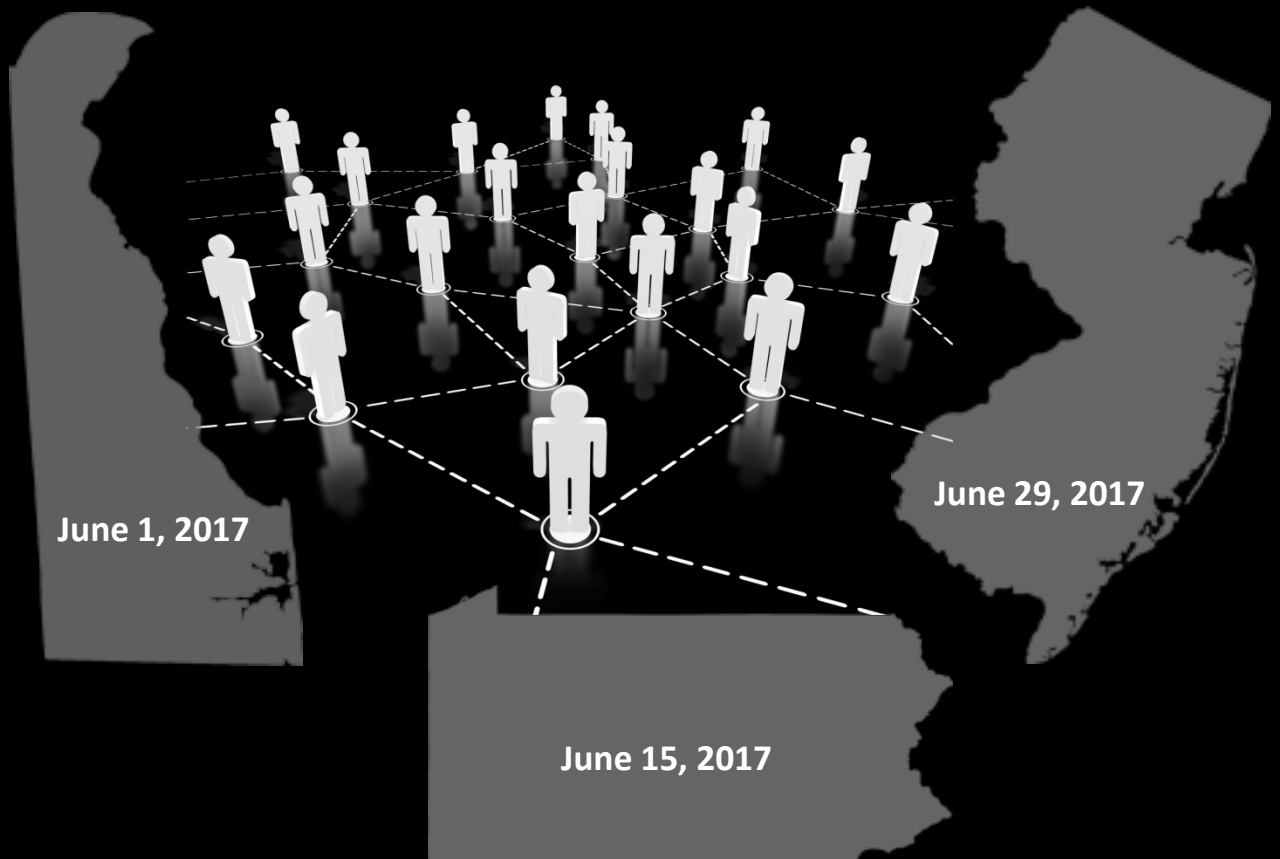


National Association of
Health Services Executives
Delaware Valley Chapter



break · through

SAVE THE DATES



This summer, NAHSE-DVC will host three FREE networking events where you can enjoy good food, great company and gain insight on serving in a leadership capacity in the chapter!

Stay tuned for more details...

Visit www.nahsedvc.com/calendar for our event calendar.





National Association of
Health Services Executives
Delaware Valley Chapter



break · through

Equity v. Reality:

Is All Healthcare Created Equal?

Friday, August 11, 2017

8:30am-3:00pm

Samuel Riggs Alumni Center
University of Maryland, College Park,
7801 Alumni Dr. College Park, MD 20742



NAHSE
Baltimore

Regional Conference

Register Today! <https://nahseregionalevent2017.eventbrite.com>



National Association of Health Services Executives

**C-SUITE
LEADERSHIP
EXPERIENCE**

SAVE THE DATE

May 25-28, 2017

Hyatt Regency Scottsdale
Resort & Spa at Gainey Ranch
Scottsdale, Arizona





National Association of
Health Services Executives
Delaware Valley Chapter

break • through



To continually serve you, we added a “Job Opportunities” page to our website. Visit www.nahsedvc.com/jobopportunities for current job and internship openings today!

The screenshot shows the website header with the NAHSE logo and chapter name. The navigation bar includes links for Home, About Us, Event Calendar, Get Involved, Job Opportunities (highlighted), Contact Us, and Donate Today. Below the navigation bar is a large image of a sunset sky. The main heading is "CURRENT OPENINGS" with sub-headings for "PHILADELPHIA", "NEW JERSEY", and "DELAWARE". Under the "JOBS:" section, two openings are listed: "Vice President-Patient Care Services, Women's & Children" at Christiana Care Health System in Newark, DE, and "Manager, Revenue Cycle" in Baltimore, MD. Each listing includes a brief description and a link to the full job posting.

Listserv



Email us at infonahse@gmail.com

Social Media



Instagram: @NAHSEDVC



Facebook: @NAHSE Delaware Valley Chapter



LinkedIn Group: NAHSE—Delaware Valley Chapter (DVC)

STAY CONNECTED